

# CLINICAL PRACTICAL *Internship*



**ICS** INDIAN  
COUNSELLING  
SERVICES

YOUR MENTAL HEALTH, OUR PRIORITY

# CLINICAL PSYCHOLOGY



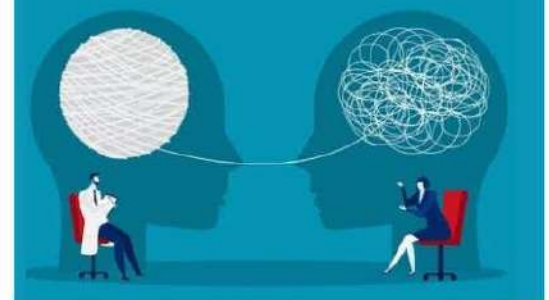
## What is Clinical Psychology ?

Clinical Psychology is the practice of assessing, diagnosing, treating and preventing mental and emotional disorders, ranging from depression, anxiety and eating disorders to severe psychiatric disorders such as bipolar disorder, schizophrenia, in human beings.

Clinical Psychology is a branch of psychology that addresses behavioral and mental health issues faced by individuals across the lifespan. It includes emotional, intellectual, psychological, social, and behavioral instability.



Clinical psychology is the study and application of psychology within the context of clinical practice. It is designed to help people understand & work through their mental & emotional health issues.





# WHAT DOES A CLINICAL PSYCHOLOGIST DO?

Professionals who work in this field are known as clinical psychologists, & they typically have a doctoral degree in psychology. The clinical psychologist meets with clients to recognise problems—behavioural, mental & emotional—in their lives. Through tests, interviews, & observation, the psychologist will identify any potential or existing disorders. Then, along with the client, they devise a programme of treatment as per the client's requirements. Psychologists keep an eye on the client's progress regularly to make sure that their needs are met by the course of action, & to regulate it if needed.



## ON THE JOB, CLINICAL PSYCHOLOGISTS:

- Identify psychological, emotional or behavioral issues
- Diagnose psychological, emotional or behavioral disorders
- Develop and implement treatment plans and therapeutic processes
- Help clients define goals and plan action to achieve personal, social, educational and vocational development and adjustment
- Monitor client progress through regular meetings or sessions

Clinical psychology is often considered one of the broadest forms of mental health treatments. Instead of being highly specialized, it can address myriad psychological hurdles.





# Clinical Psychology Solves Complex Human Problems

Clinical psychologists work with people with a wide range of illnesses, conditions and disorders. These might include:

- Anxiety
- Depression
- Serious and Enduring Mental illness
- Adjustment to Physical illness
- Neurological Disorders
- Addictive Behaviours
- Childhood Developmental & Behaviour Disorders
- Personal and Family Relationship Problems



A clinical psychologist works with people experiencing a range of difficulties that can occur at any time in their lives. These difficulties can relate to problems with:

- Emotions
- Relationships
- Adverse life events
- Behaviour
- Offending
- Unusual experiences
- Drugs and/ or alcohol use



To assess a client, a clinical psychologist may do a clinical assessment using a variety of methods, including:

- Psychometric Tests
- Interviews
- Direct Observation of Behaviour

# CLINICAL PRACTICAL INTERNSHIP



## ICS IS PRESENTING -

An exciting and in-depth practical program on Clinical Psychology. This program provides students and professionals with the opportunity to experience various aspects of practical work in a supervised setting and also give you the chance to get insights into what it is like to work as a Clinical Psychologist.





# What does it Focus on?

## TOPICS :

- Depression
- Dementia
- Substance Abuse (Alcohol Dependence)
- Schizophrenia
- Anxiety Disorders
- Obsessive-Compulsive Disorder
- Dissociative Disorders
- Somatoform Disorders
- Personality Disorders
- Mood Disorders

## Program Overview

Here we are providing a great platform where you get to understand several disorders as per the ICD and DSM criteria and how you implement the theoretical knowledge of clinical psychology in practical aspects. Apart from that, you will get trained about the entire procedure from the moment a patient arrives, to diagnosing & treating them, with the help of clinical practical psychology case studies and case history taking to enhance the learning process.







## **PROGRAM HIGHLIGHTS**

- Includes Case Studies
- Practical Experiences/  
Workshop
- Quizzes to Follow your  
Progress
- Monthly Training  
Sessions
- Group Discussions
- Research Work



## **KEY LEARNINGS OF PROGRAM -**

- Conceptualization of psychopathology to arrive at the clinical diagnosis following a classificatory system.
- To evaluate the caregivers' burden, disability and dysfunctions that are often associated with psychological disorders and intervene as indicated in each case.
- The learning would be primarily through clinical enhancement of cases having psychiatric disorders

# ▶ TAKE AWAY:

- Grade Sheet
- Study Materials
- Online Resources
- E-Certificate
- Letter of Recommendation



## Who can participate in this program :

The course is aimed at anyone who wants to build the skills and wants to Learn the Practical aspect of Psychology. Aspiring/practicing counselors Psychology enthusiasts Independent therapist, Mental health professionals. School students, teachers, special educators BSC/MSC/BA/MA/PHD Any professional involved in mental health well-being.



*Get to learn from  
International  
Certified Expert*

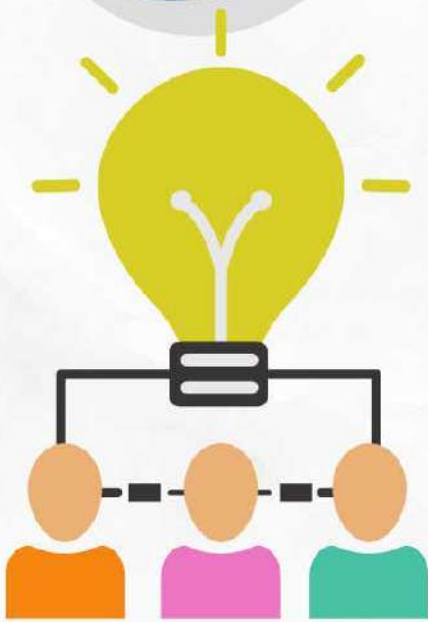






ICS

## WHY CHOOSE US?



- Chance to get listed on ICS network
- Chance to handle real clients under the supervision of RCI Licensed Psychologists
- Live and recording session (Video notes)
- Ready to start a virtual office
- Awards to our star performer
- Get Hardcopy certificate & appreciation letter

## PERKS & BENEFITS

- Lifetime learning support
- Lifetime access of PDF study material and PPT note
- 24\*7 chat facility
- ID card and email confirmation
- Notification of the classes before the class start
- Dedicated academic counselor



[www.indiancounsellingservices.com](http://www.indiancounsellingservices.com)



ICS





## MODE OF PAYMENT

---

- APPLICATION OF INDIAN COUNSELLING SERVICES
- CREDIT CARD
- DEBIT CARD
- BANK TRANSFER
- PHONE PAY
- GOOGLE PAY
- PAYTM
- THROUGH ANY UPI

## CONTACT

---

- +919711888889
- +919717972456
- +917303455209
- +919205932567

[Info@indiancounsellingservices.com](mailto:Info@indiancounsellingservices.com)

**COURSE DURATION  
1.5 MONTH**

---

**BOOK YOUR  
SLOT NOW**

---

**LIMITED SEATS  
AVAILABLE**

---

